

# AGROMETEOROLOGICAL BULLETIN

Doc No: TEA 3/3/7/2 F-004

Revision No: 1

Effective Date: 01.07.2017

Page No: 1 of 5

Approved by:



**REPORTING PERIOD:  
01 – 10 JANUARY 2026**



**ISSUE No.: 10**

**SEASON: 2025/26**

**RELEASED: 14/01/2026**

## CONTENTS

CONTENTS.....	1
HIGHLIGHTS .....	1
RAINFALL AND TEMPERATURES.....	2
RAINFALL .....	2
TEMPERATURES .....	3
MAIZE AND OTHER CROPS .....	3
MAIZE CROP STAGE AND CONDITION .	3
OTHER CROPS .....	3
CURRENT FARMING ACTIVITY .....	3
LIVESTOCK AND PASTURES.....	4
WATER SITUATION .....	4
MEDIUM-TERM OUTLOOK .....	4
RAINFALL .....	4
TEMPERATURE .....	4
SOIL MOISTURE .....	4
WIND SPEED .....	4

## HIGHLIGHTS

- **Significant rainfall observed...**
- **Good vegetation condition...**
- **Weeding farming activities...**
- **An increase in rainfall is anticipated...**
- **Cool to warm temperatures forecasted...**
- **Increase in soil moisture expected...**

# AGROMETEOROLOGICAL BULLETIN

Doc No: TEA 3/3/7/2 F-004
Revision No: 1
Effective Date: 01.07.2017
Page No: 2 of 5
Approved by:

## RAINFALL AND TEMPERATURES

### RAINFALL

Above average rainfall was observed in the 1<sup>st</sup> dekad of January 2026 (Figure 1) and (Map 1).

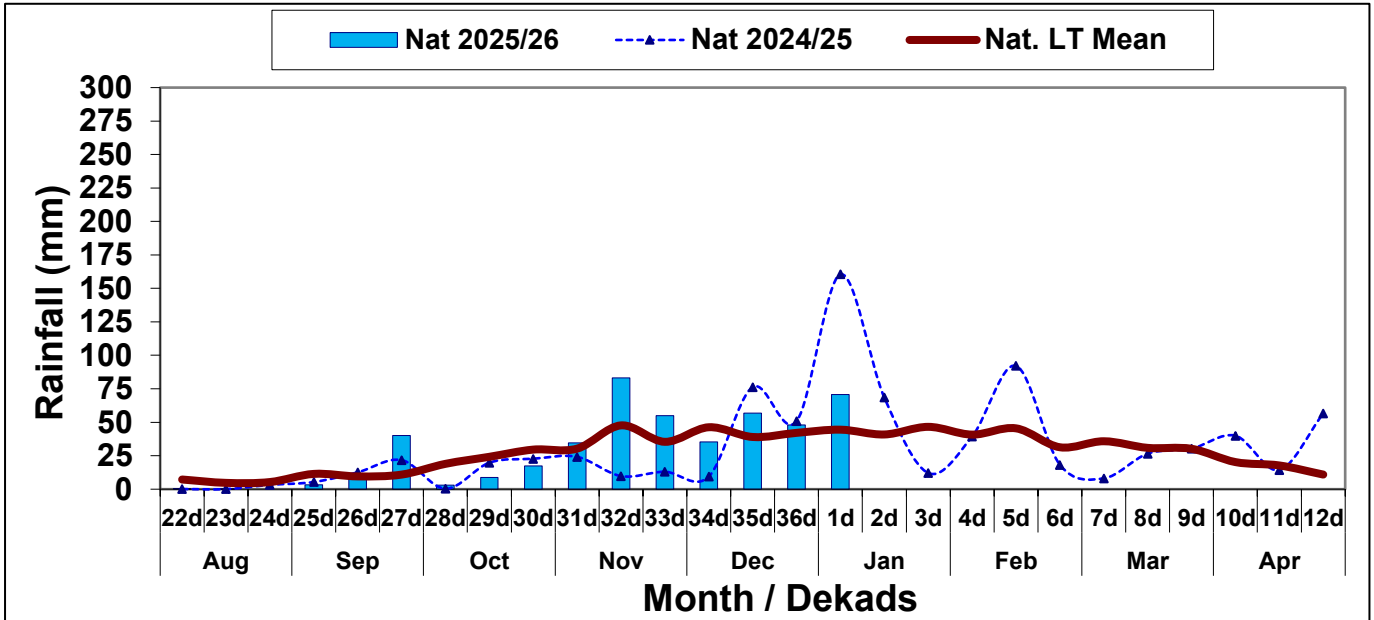
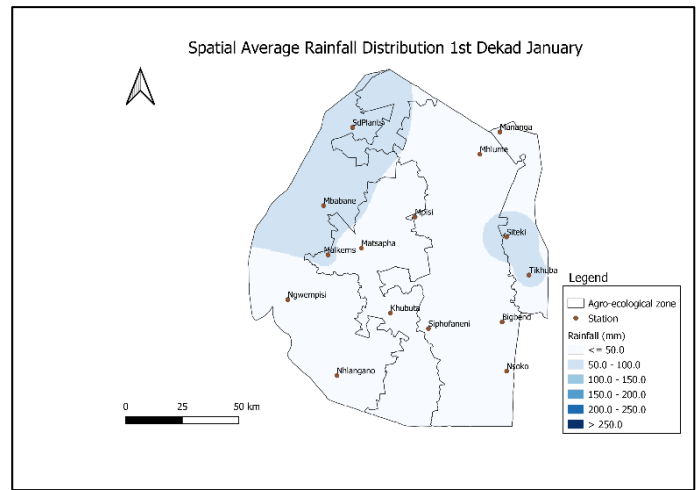
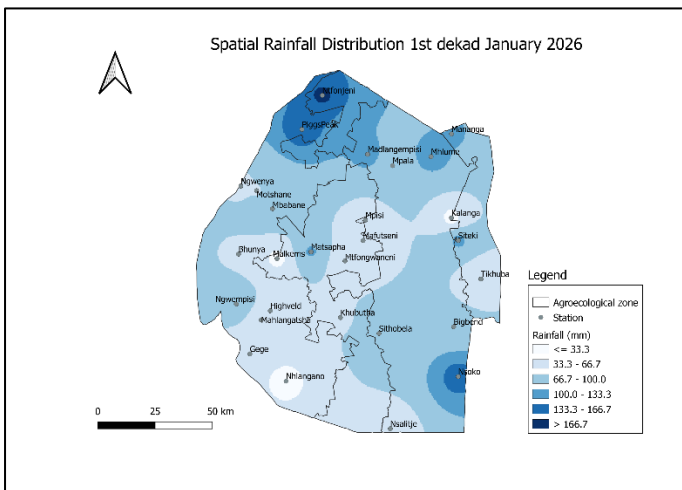


Figure 1: Rainfall distribution 1<sup>st</sup> dekad January 2026



Map 1: Spatial rainfall distribution 1<sup>st</sup> dekad January 2026

Map 2: Spatial Average Rainfall distribution 1st dekad January

# AGROMETEOROLOGICAL BULLETIN

Doc No: TEA 3/3/7/2 F-004

Revision No: 1

Effective Date: 01.07.2017

Page No: 3 of 5

Approved by:

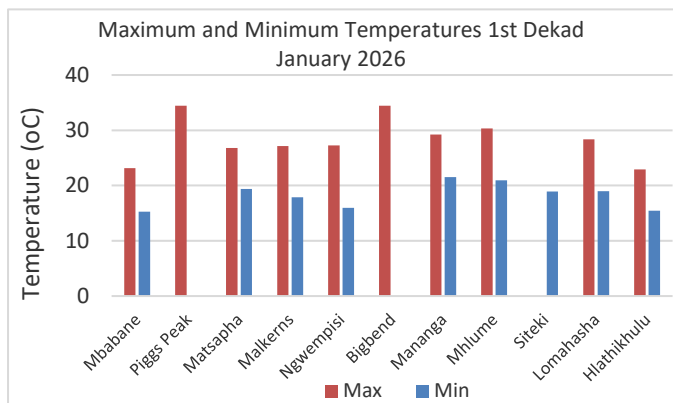
All the Agroecological zones observed normal to above normal rainfall (**Table 1**).

**Table 1:** Rainfall (mm) 1<sup>st</sup> dekad January 2026

	HV	MV	LV	LP
<b>2024/25</b>	173	161	144	154
<b>Average</b>	61	40	31	55
<b>2025/26</b>	66	63	85	71
<b>Anomaly</b>	<b>5</b>	<b>23</b>	<b>54</b>	<b>16</b>

## TEMPERATURES

Cool to warm temperatures generally prevailed during the reporting period (**Figure 2**) and (**Figure 3**).

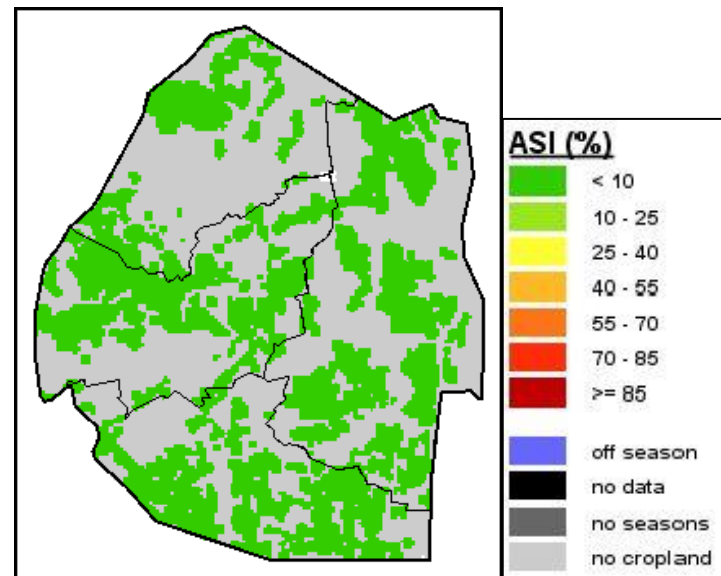


**Figure 2:** Maximum and Minimum temperature 1<sup>st</sup> dekad of January 2026

## MAIZE AND OTHER CROPS

### MAIZE CROP STAGE AND CONDITION

The Agriculture Stress Index indicates that croplands are not experiencing water stress.



**Image 1:** Agriculture Stress Index 1<sup>st</sup> dekad January 2026  
Source: FAO-GIEWS

### OTHER CROPS

Farmers are encouraged to plant legumes, such as Groundnuts for Middleveld, Lubombo plateau and Lowveld. Varieties like Natal common and ICG 221 (Spanish) are early-maturing and can still be planted.

### CURRENT FARMING ACTIVITY

Most farmers are weeding their maize crops and have already planted some legumes, such as, Jugo beans at very low scales.

Compiled and Issued by: Agrometeorological Unit,

Swaziland Meteorological Service, Ministry of Tourism and Environmental Affairs.

Box 2652, Mbabane, Swaziland. ☎ (+268) 2404 8859 / 2404 6274. 📠 Fax: 2404 1530

E-mail: [dudu@swazimet.gov.sz](mailto:dudu@swazimet.gov.sz)

## AGROMETEOROLOGICAL BULLETIN

Doc No: TEA 3/3/7/2 F-004

Revision No: 1

Effective Date: 01.07.2017

Page No: 4 of 5

Approved by:

### LIVESTOCK AND PASTURES

Livestock is in good condition as rangelands are reported to be in good condition. Foot and Mouth disease reported to be spreading in some areas.

### WATER SITUATION

Most dam reservoirs are reported to be at full capacities.

### MEDIUM-TERM OUTLOOK

#### RAINFALL

An increase in rainfall is expected in the outlook period.

#### TEMPERATURE

Cool to warm temperatures are anticipated in the outlook period.

#### SOIL MOISTURE

An increase in soil moisture is expected in the outlook period.

#### WIND SPEED

Wind will generally be light to moderate in the outlook period

**NB: Outlook period is ten days from date of issue**

# AGROMETEOROLOGICAL BULLETIN

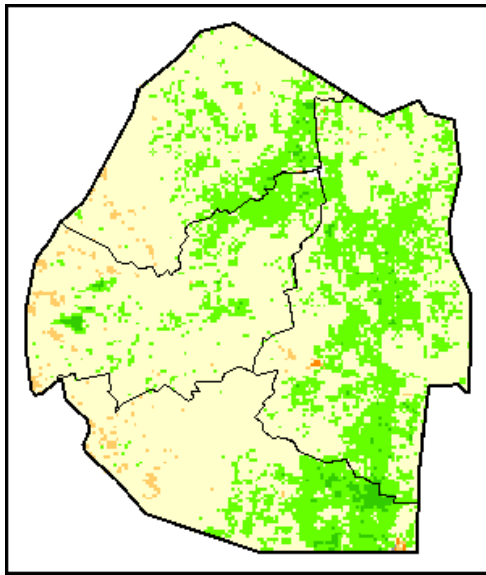
Doc No: TEA 3/3/7/2 F-004

Revision No: 1

Effective Date: 01.07.2017

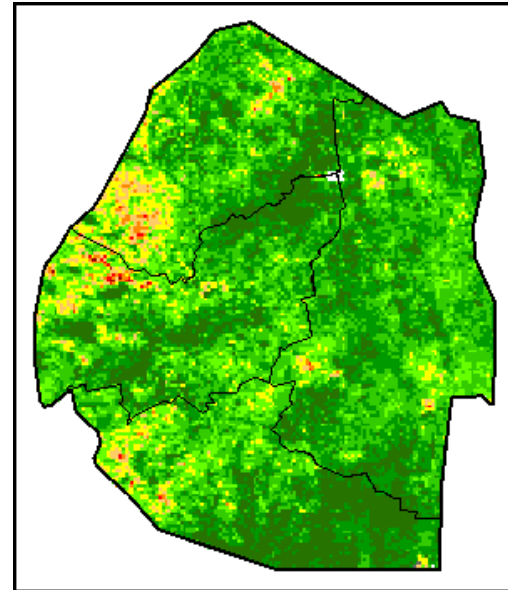
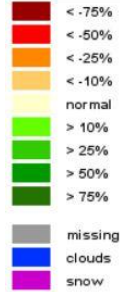
Page No: 5 of 5

Approved by:



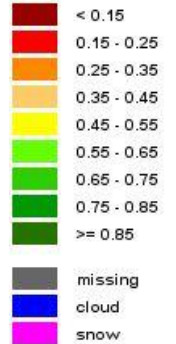
## Legend

### Difference to LTA



## Legend

### VHI



**Image 2:** Normalized Difference Vegetation Index (NDVI) Anomaly (1<sup>st</sup> Dekad January 2026)  
Source: FAO-GIEWS

**Image 3:** Vegetation Health Index (VHI) (1<sup>st</sup> Dekad January 2026)  
Source: FAO-GIEWS